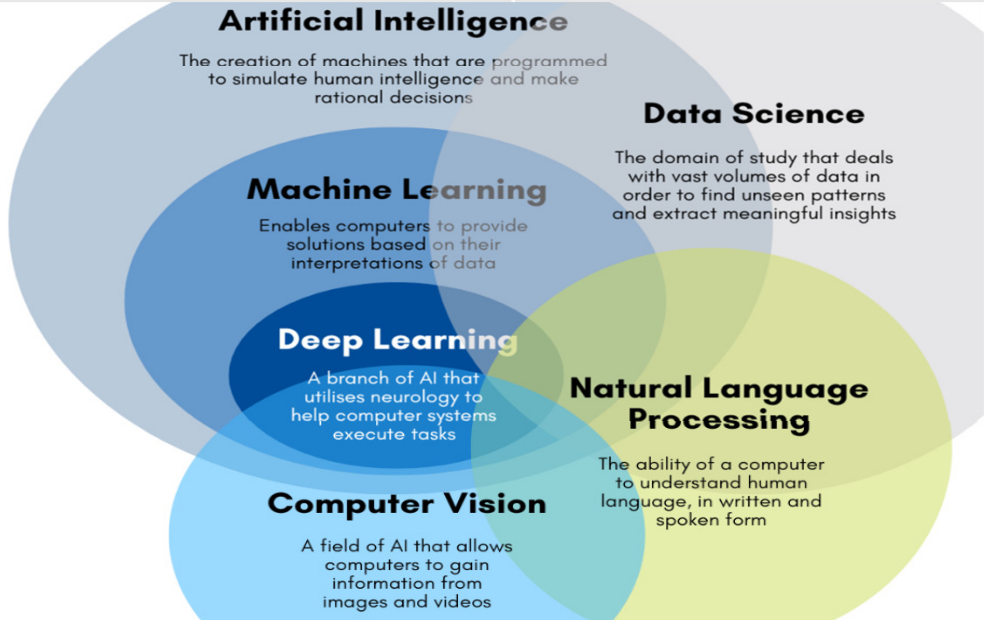
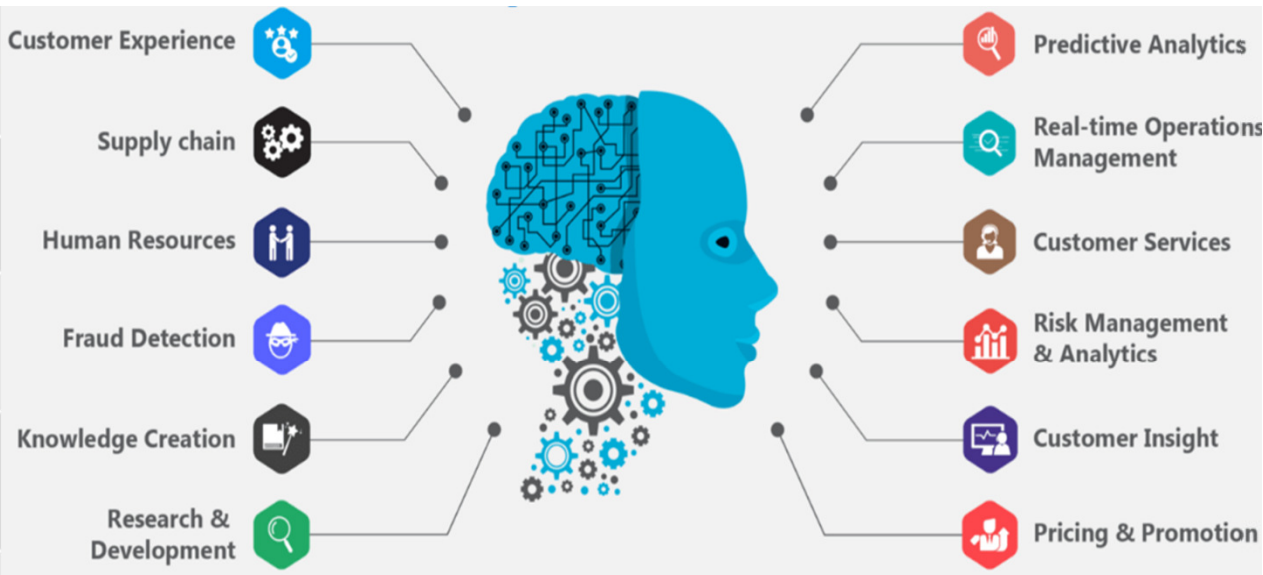


AI stands for Artificial intelligence, where intelligence is defined acquisition of knowledge intelligence is defined as a ability to acquire and apply knowledge.	ML stands for Machine Learning which is defined as the acquisition of knowledge or skill
The aim is to increase chance of success and not accuracy.	The aim is to increase accuracy, but it does not care about success
It work as a computer program that does smart work	It is a simple concept machine takes data and learn from data.
The goal is to simulate natural intelligence to solve complex problem	The goal is to learn from data on certain task to maximize the performance of machine on this task.
AI is decision making.	ML allows system to learn new things from data.



	Human	Machine
Cost	Low initial cost and high running cost.	High initial cost (in case of robots) and low running cost (work 24/7).
Creativity	Creative	Uninspired
Permanency of Intelligence	Human intelligence is perishable. We could not preserve Einstein's intelligence after his death.	Machine intelligence is permanent. It is easy to preserve intelligent tools like Siri and Watson.
Ease of duplication and dissemination of knowledge	Slow language-based communication process, some expertise can never be duplicated.	Knowledge can be copied from a machine and easily moved to another one.

Források: Singapore CS, CB Insight, TDS, Hitachi Systems Security,